

CARLINGFORD 279

The Carlingford is a family friendly design that perfectly balances spacious living areas with more private zones to keep the whole family happy and comfortable. The generous, open plan layout provides a seamless flow from the lounge to the kitchen, and to the dining and family areas. Entertainers will love the walk-in pantry, which has plenty of space for dry goods, as well as bulky kitchen appliances.



4



2



2



BELFORD FAÇADE



RICHMOND FAÇADE



HYDE FAÇADE



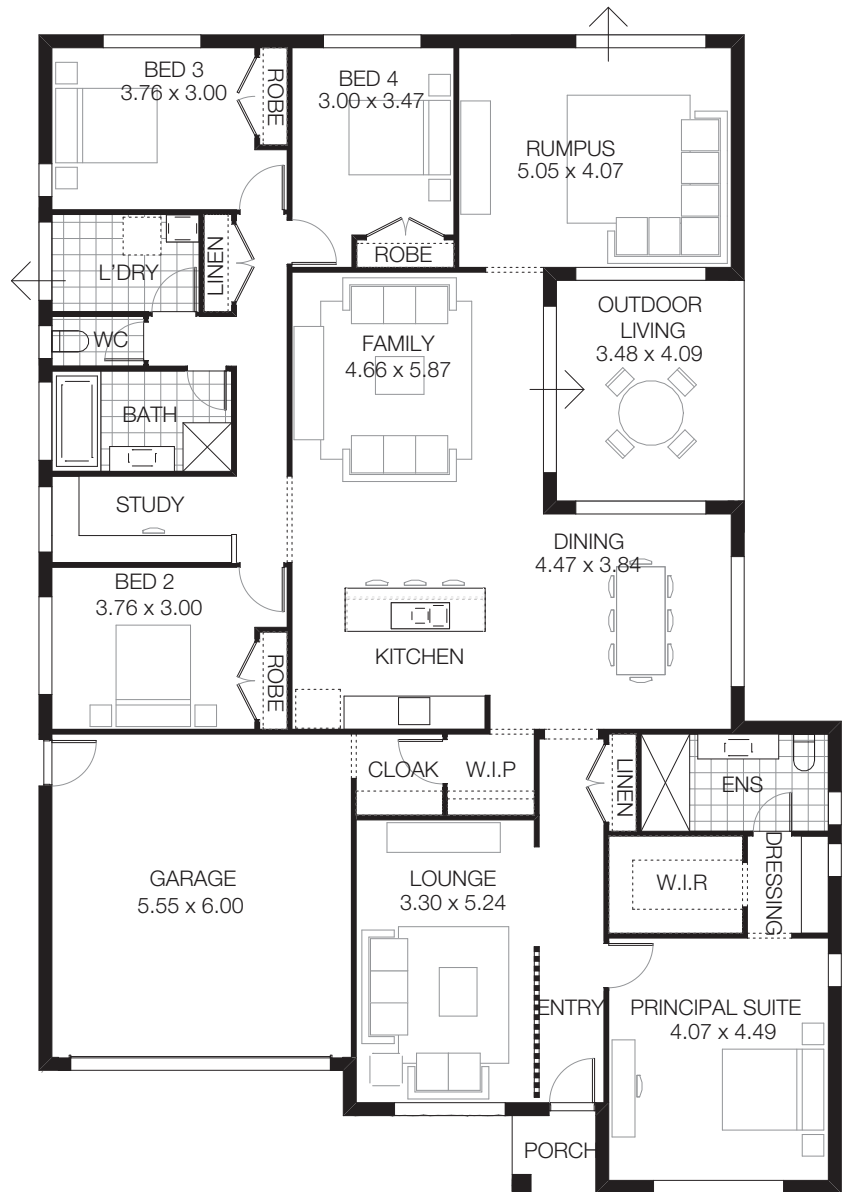
OXLEY FAÇADE



GREENDALE FAÇADE

CARLINGFORD 279

MIN LOT WIDTH	18m	
MIN LOT DEPTH	30m	
HOME WIDTH	14.87m	
HOME LENGTH	21.47m	
RESIDENCE	226.50sqm	24.38sq
OUTDOOR LIVING	14.20sqm	1.53sq
PORCH	2.20sqm	0.23sq
GARAGE	36.10sqm	3.88sq
TOTAL	279.00sqm	30.03sq



“WITH OVER 30 YEARS’ EXPERIENCE, BURBANK OFFERS EXCEPTIONAL SERVICE, OUTSTANDING QUALITY AND A WIDE RANGE OF HOME SOLUTIONS TO SUIT EVERY LIFESTYLE. BURBANK’S MISSION IS TO CREATE PLACES FOR PEOPLE TO CALL HOME.”

Jarrod Sanfilippo
Managing Director

*Copyright conditions. All photos and illustrations are representative only. Floor plans and specifications may be varied by Burbank Australia Pty Ltd (“Burbank”) without notice, the dimensions are diagrammatic only and a Building Contract with final drawings will display correct dimensions and detail. All designs are the property of Burbank and must not be used, reproduced, copied or varied, wholly or in part without written permission from an authorised Burbank representative. Copyright Burbank Australia (NSW) Pty Ltd. ABN 88610822770.



Call 13 BURBANK Visit burbank.com.au

Burbank 
#noplacelikehome